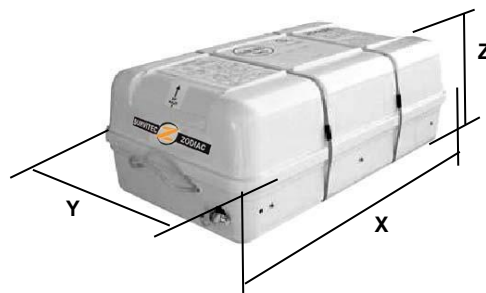
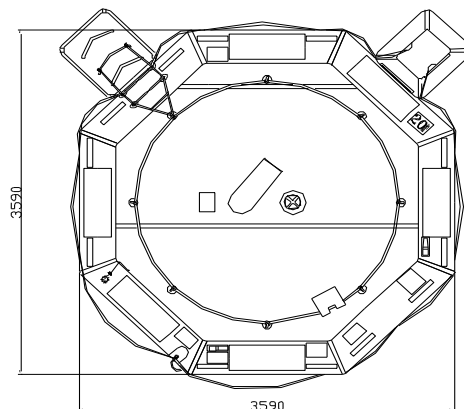
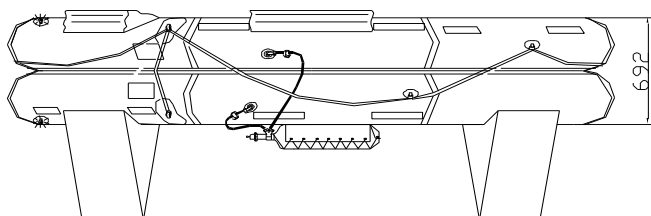
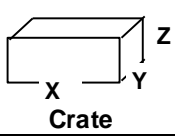


# ORIL 20 MAN

## OPEN REVERSIBLE INFLATABLE LIFERAFT LOW PROFILE CONTAINER (LPC) – ROUND CONTAINER



20 MAN	HSC PACK			HSC PACK		
Container	N134			N12		
Dimensions	X: 965 mm X: 3' 2"	Y: 596 mm Y: 1' 11,47"	Z: 380 mm Z: 1' 2,97"	X: 1160 mm X: 3' 9,67"	Y: 560 mm Y: 1' 10,05"	Z: 513 mm Z: 1' 8,2"
Liferaft Net Weight	77 kg / 170 pounds			77 kg / 170 pounds		
Max. height stowage	18 m / 60'			18 m / 60'		
Painter line length	18 m / 60'					
Inflation Cylinder	1 x 15 liter					
 Crate	X: 1020 mm X: 3' 4,16"	Y: 630 mm Y: 2' 0,81"	Z: 400 mm Z: 1' 3,75"	X: 1250 mm X: 4' 1,22"	Y: 600 mm Y: 1' 11,63"	Z: 700 mm Z: 2' 3,56"
	80 kg / 177 pounds			92 kg / 203 pounds		
	0,258 m3 / 9,08 cubic foot			0,525 m3 / 18,54 cubic foot		
<b>Towing force</b>	<b>2 knots</b>			<b>3 knots</b>		
Without sea anchor	71 daN			102 daN		
With sea anchor	115 daN			188 daN		

**Approvals:** **EC (MED) – BV**

ORIL 20 cont rond & LPC 21022017 KLT.doc Issue: 6 Date: 21/02/2017

Dimensions and weight +/- 5%  
SURVITEC SAS reserves the right to change specification without notice.  
For installation, add minimum +10mm for clearance to dimensions of the container.