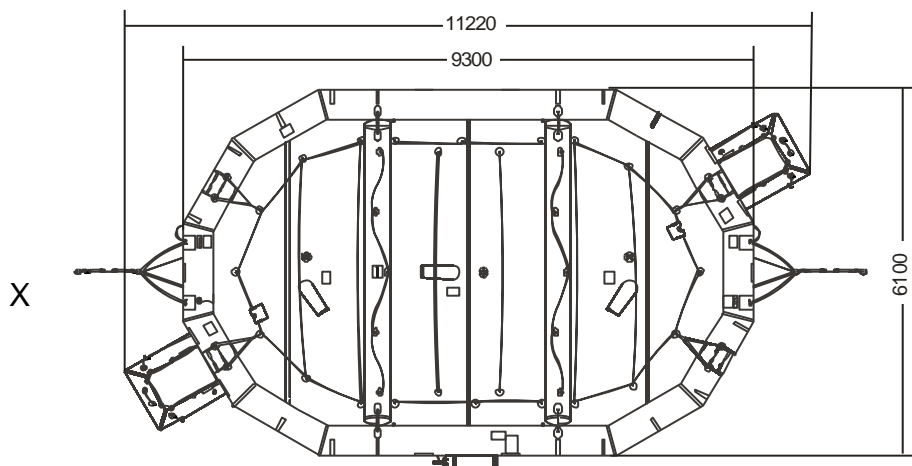
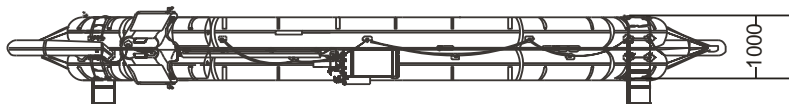
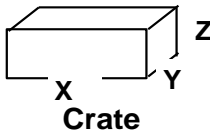


IBA 100 MAN OPEN REVERSIBLE INFLATABLE LIFERAFT ROUND CONTAINER



100 MAN			
Container	N18		
Dimensions	X: 1560 mm	Y: 852 mm	Z: 835 mm
	X: 5' 1,42"	Y: 2' 9,55"	Z: 2' 8,88"
Liferaft Net Weight	305 kg / 673 pounds		
Max. height stowage	20 m / 66'		
Painter line length	30 m / 99'		
Inflation Cylinder	4 x 20 liter		
 Crate	X: 1645 mm	Y: 940 mm	Z: 1050 mm
	X: 5' 4,77"	Y: 3' 1,01"	Z: 3' 5,34"
	340 kg / 750 pounds		
	1,624 m3 / 57,34 cubic foot		
Towing force	2 knots		3 knots
Without sea anchor	196 daN	315 daN	
With sea anchor	232 daN	420 daN	

Approvals:	USCG
-------------------	-------------

IBA 100 cont rond 21022017 KLT.doc	Issue: 4	Date: 21/02/2017
------------------------------------	----------	------------------

Dimensions and weight +/- 5%
 SURVITEC SAS reserves the right to change specification without notice.
 For installation, add minimum +10mm for clearance to dimensions of the container.